

Features:

- Single stage filter
- Low leakage version available
- High conducted attenuation performance
- Superior Performance
- Chassis mounting

Applications:

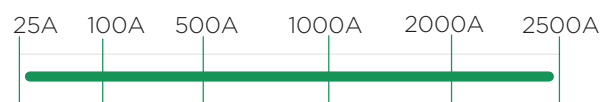
- PV Inverters
- UPS
- DC Motor Drives
- DC Quick Chargers
- Energy / Battery storage systems
- DC Charger Installations



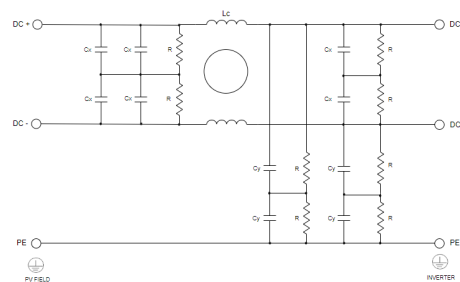
Performance Indicator



Rated current [A]



Typical circuit Diagram



DATA SHEET

DC EMI FILTER FOR PHOTO VOLTAIC INVERTERS-MF610



Description

Filter with additional differential mode rejection in low frequency. For use with switched mode power supplies to reduce noise from power supply back into the mains. Filter also provides good attenuation of incoming interference

Technical Specifications:

Maximum Continuous Operating Voltage	: 1200 VDC Max
Current ratings	: 25A to 2500A @ 55°C
High Potential test voltage	: +, - to PE 3600VDC for 2 sec + to - 3000VDC for 2 sec
Overload Capability	: 135% of Rated current for 15 minutes
Design Corresponding to	: UL1283, CSA 22.2 No.8-13 and IEC 60939
Flammability corresponding to	: UL 94 V-0
Temperature range	: -25°C to +85°C
Climatic Category	: 25/85/21

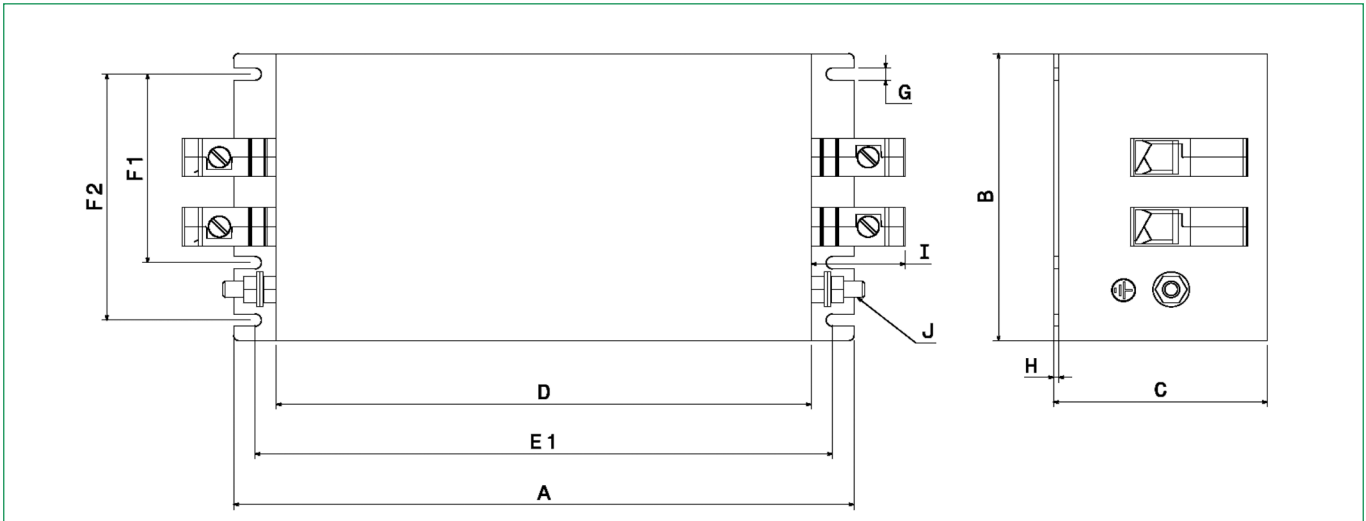
Ordering Information

Model Number	Part Number	Rated Current @55°C	Termination		Weight (Kgs)
					
MF610S-25	E101732-1	25A	16		1.2
MF610S-50	E103382-1	50A	35		1.8
MF610S-75	E104946-1	75A	35		2
MF610S-100	E104947-1	100A	50		3
MF610S-150	E104948-1	150A	95		5
MF610S-250	E103346-1	250A		BB	5.2
MF610S-400	E104949-1	400A		BB	6.5
MF610S-600	E104950-1	600A		BB	7
MF610S-800	E104951-1	800A		BB	9.5
MF610S-1000	E104952-1	1000A		BB	9.8
MF610S-1500	E101553-1	1500A		BB	17
MF610S-2500	E104953-1	2500A		BB	28
MF610SL-25	E104954-1	25A	16		1.2
MF610SL-50	E104955-1	50A	35		1.8
MF610SL-75	E104956-1	75A	35		2
MF610SL-100	E104957-1	100A	50		3
MF610SL-150	E104958-1	150A	95		5
MF610SL-250	E104959-1	250A		BB	5.2
MF610SL-400	E104960-1	400A		BB	6.5
MF610SL-600	E104961-1	600A		BB	7
MF610SL-800	E104962-1	800A		BB	9.5
MF610SL-1000	E104963-1	1000A		BB	9.8
MF610SL-1500	E104964-1	1500A		BB	17
MF610SL - 2500	E104965-1	2500A		BB	28

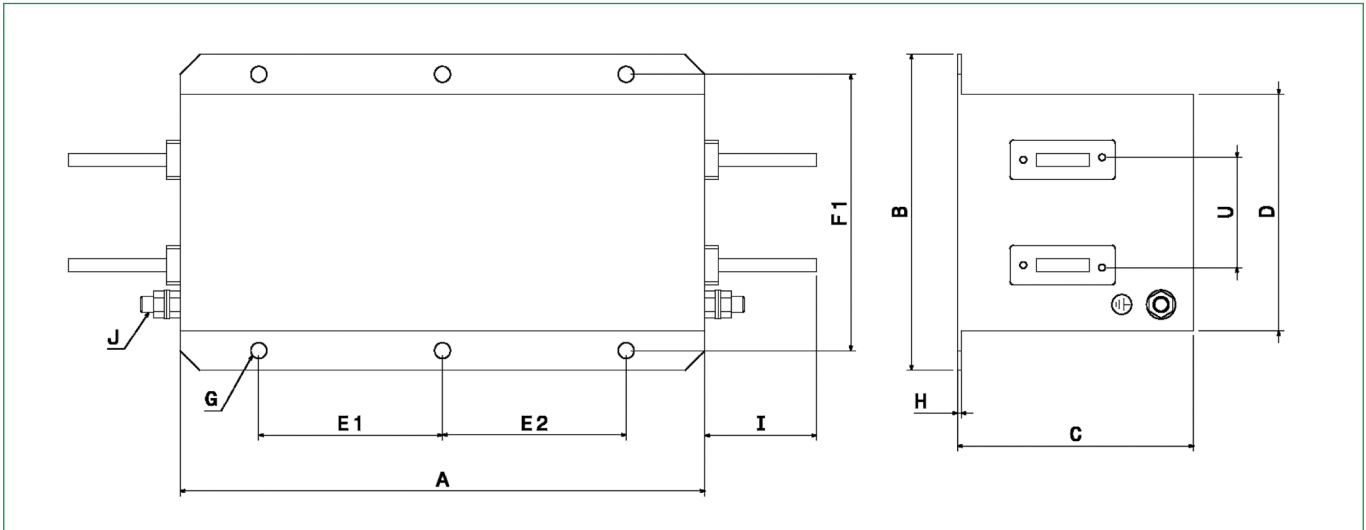
Note: *L - Low leakage type without Y capacitors versions

Mechanical Drawing:

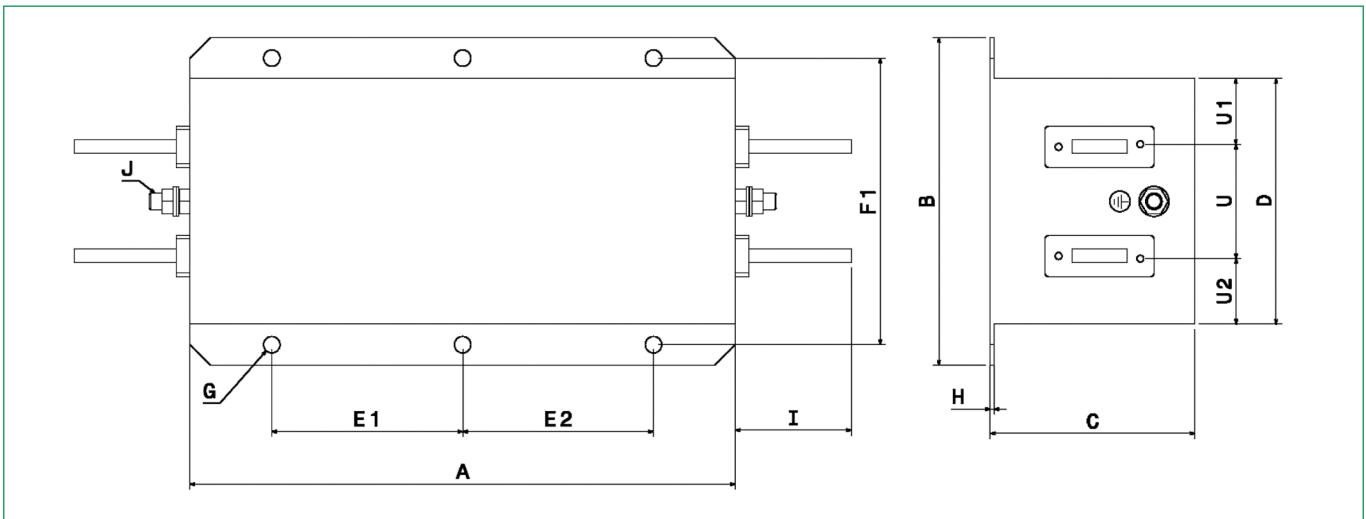
25A to 150A



250A to 600A

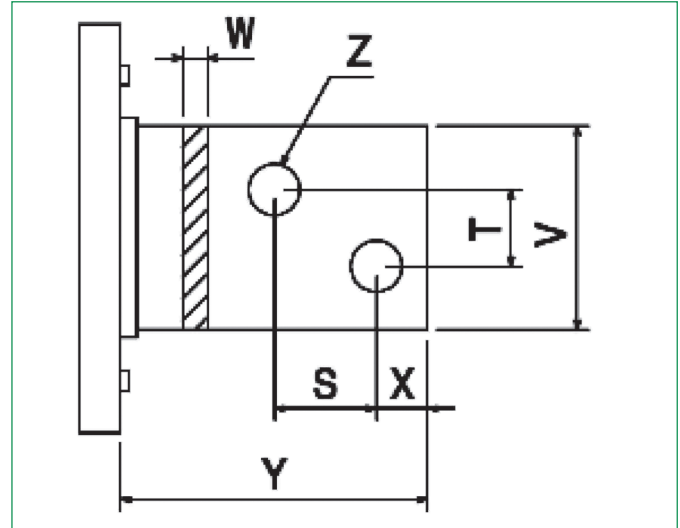
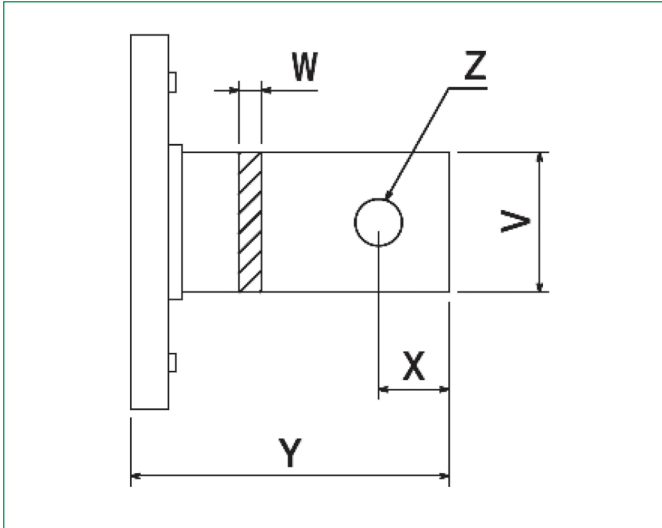


800A to 2500A

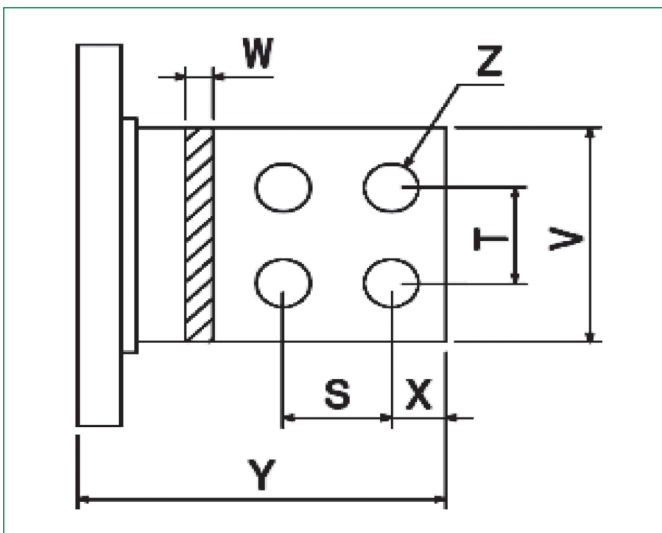


Bus bar details
250A to 1000A

1500A




2500A



Note: All dimensions in mm; Tolerances according to ISO2768-C

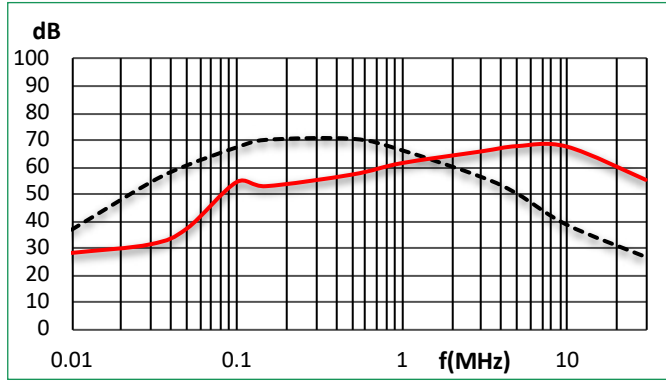
Connector Details

	16	35	50	95
Wire Section-Flexible(mm ²)	16mm ²	35mm ²	50mm ²	95mm ²
Flex wire	10mm ²	25mm ²	50mm ²	95mm ²
AWG type wire	AWG 8	AWG 2	AWG 1/0	AWG 4/0
Recommended torque	1.2 NM	4 NM	6 NM	18 NM

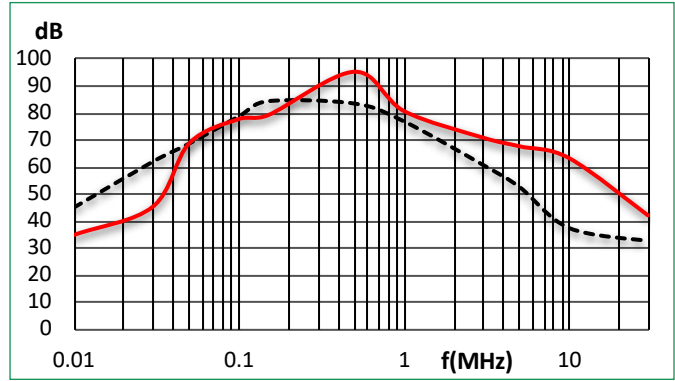
Insertion Loss : Common mode _____ Differential Mode

Per CISPR 17; DM=50/50 sym; CM=50/50 asym

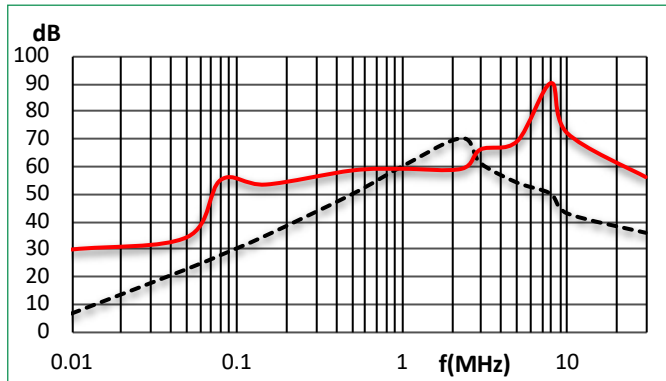
50A



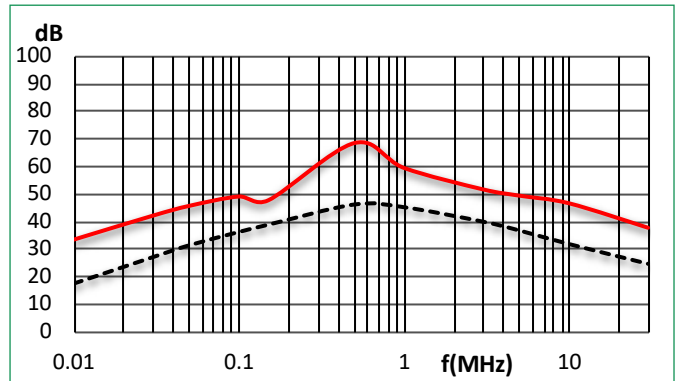
100A



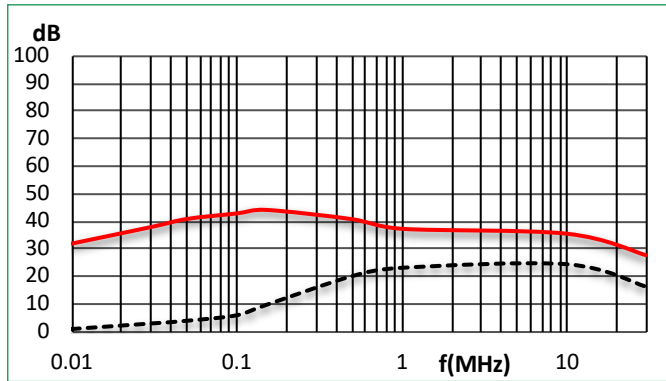
150A



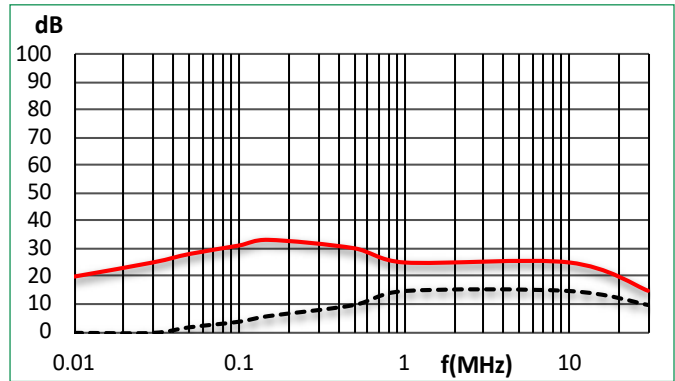
250A



400A



800A-2500A



Dimensions

	25A	50A	75A	100A	150A	250A	400A	600A	800A	1000A	1500A	2500A
A	170	200	200	220	250	300	300	300	300	300	300	400
B	80	95	95	125	140	180	190	190	200	200	200	250
C	65	80	80	95	115	110	110	110	140	140	150	180
D	140	170	170	190	220	130	140	140	150	150	150	195
E1	152.5	182.5	182.5	202.5	232.5	130	130	130	130	130	130	190
E2						110	110	110	110	110	110	150
F1	45	60	60	80	100	155	165	165	175	175	175	225
F2	60	75	75	100	120							
G	5.5	5.5	5.5	5.5	5.5	Ø12	Ø12	Ø12	Ø12	Ø12	Ø12	Ø12
H	1	1.5	1.5	1.5	2	2	2	2	3	3	3	3
I	25	39	39	45	51	58	58	58	65	65	110	100
J	M5	M6	M6	M8	M10	M10	M10	M10	M12	M12	M12	M16
S											43	35
T											26	35
U						70	70	70	70	70	70	100
U1									45	45	45	61
U2									35	35	35	34
V						20	25	25	40	40	60	70
W						5	6	8	8	8	10	15
X						15	15	15	20	20	17	20
Y						58	58	58	65	65	110	100
Z						Ø9	Ø10.5	Ø10.5	Ø14	Ø14	Ø14	Ø14